



Act 1 Theatre Newsletter

Vol 26 Issue 9 September 2024

The President's Notes...

Panic in Pipton has had a great opening weekend with top audience reviews. Oh, and don't forget the Spiders from Mars, only \$5. Book now for great music, a dedicated cast and crew and great theatre... a pretty special set too thanks to Royce.



Mother and Son is cast and in rehearsal. Again, get in early for tickets.

We had an unfortunate and potentially disastrous fire set on the front veranda by one of the local homeless. No alarm, sadly, but there was one during last Sunday's matinee. Funny how the alarm worked then. Thanks to Moreton Bay Council for speedy repairs and the security now in place.

Norfolk Island Festival has dedicated an award to Ed Bone for the next five years. Thanks, Norfolk and congratulations to Ed and his family

Lastly, Michele Radford's family have sorted some of her things and given us some priceless mementos that will hold pride of place on our new wall of fame and infamy. If you have any articles or photos that would be of use, please call me to discuss.

Yours in theatre.

Terry

Act 1 Theatre 2024

Management Committee

President

Terry Frawley

Vice President

Trisha Bromley

Secretary

Samantha Sutherland

Treasurer

Ramesh Maheswaran

Publicity Officer

Deb Hossack/Andrew Munslow

Sound & Lighting

Andrew Munslow

Set Building

Terry Frawley

Bar Coordinator

Terry Frawley

Stage Manager

Deb Hossack

Other Positions

Bookings Coordinator

0413 759 741

Membership Enquiries

0413 759 741

Newsletter Editor

Stan Wisniowiecki

Front-of-House Coordinator

Webmaster

Stan Wisniowiecki

Patron

Nikki Boyd MP

BOOKINGS: 0413 759 741

CONTACT ACT 1 THEATRE

Location: Pine Shire Hall

238 Gympie Rd

Cnr. Gympie Rd & Hall St (Nth)

Strathpine Qld 4500

Phone: 0458 579 269

Mail: PO Box 436

Strathpine Qld 4500

E-mail: acttheatre2@gmail.com

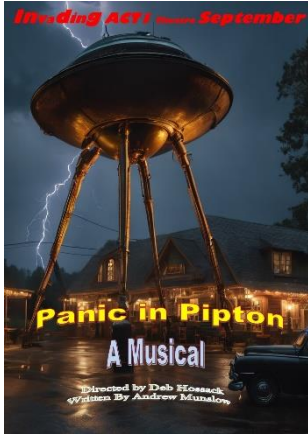
Website:

www.act1theatre.com.au



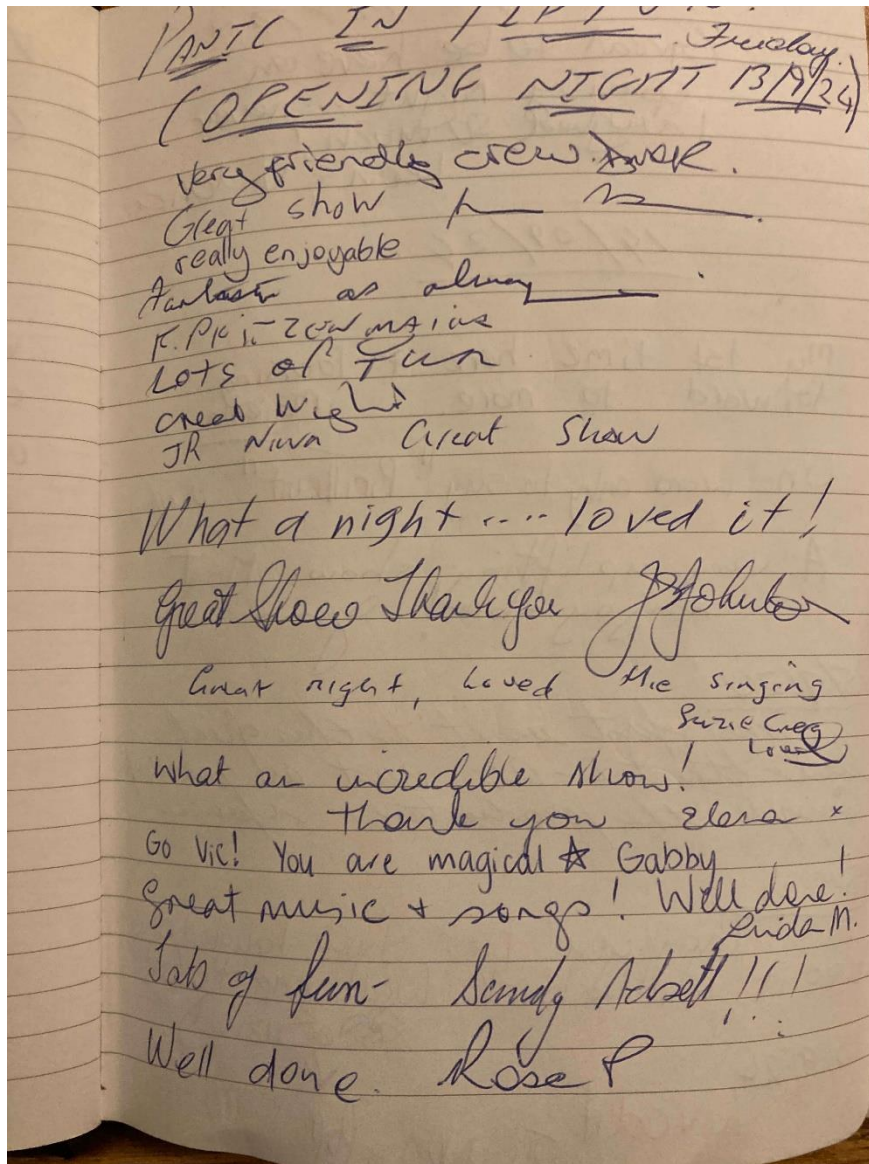
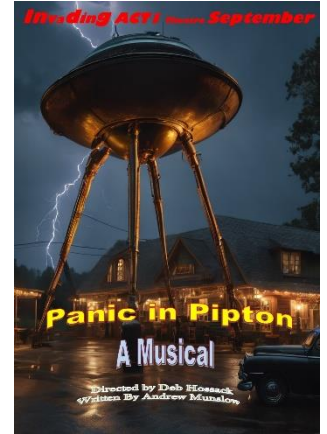
We are absolutely thrilled with the success of *Panic in Pipton*. The audiences are loving it and are leaving rave reviews! If you haven't been already, you still have one more weekend to see the show- don't miss out on the chance to see this amazing cast, band and crew in action!

Deb and Andrew



Don't miss out! Get your tickets NOW

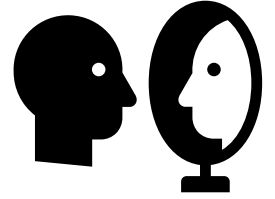
<https://www.trybooking.com/COLEX>



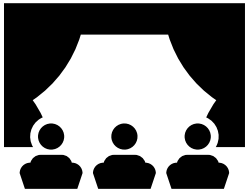


Meet the Members

It seems fitting that we start our 'Meet the Members' series with the man who is responsible for the fantastic show currently running! **Andrew Munslow** is not only in charge of all sound and lighting at Act 1, but he has also written 2 hit musicals and a very successful one-act mini-musical. He's a long-standing member of the band, *The Actones*. He's also the



extremely hard-working person behind our marketing and TryBooking. And did I mention he can act, sing and play guitar & keyboards? In fact, for anything that anyone needs help with, Andrew is there to help them. He's so important to Act 1 he has two life memberships! We think he absolutely deserves them!



Mother and Son

Introducing

our fabulous cast for the November production of *Mother and Son*. “This show is going to be a hoot, it's a very funny script,” says Michelle Whitmore, the director.

[I saw a production at Redland Museum performed by Theatre Redlands, and I can confirm that it's a cracking script specially written for the stage—Ed.]

You can buy your tickets now at...

<https://www.trybooking.com/COLGR>

The Cast

Sheryl Salmon	— Maggie
Adrian Fetzer	— Arthur
Richard Muller	— Robbie
Leown Russell	— Liz
Natalie Crawford	— Anita
Jessica Fetzer	— Monica
John Scandurra	— Steve
Saana Chang	— Bronte
Kairyn Niwa Tehuia	— Jarrod



“Updated to the new millennium, gently paced comedy *Mother & Son* maintains a ready charm and a light, breezy air. Adapting his highly successful television series for the stage, Geoffrey Atherden has mined a treasure trove of new scenarios that elevate the material well beyond a simple rehash of the tried and true original. Indian call centres, skype, mobile phones, zumba, twitter, snapchat and many more ubiquitous modern-day minutiae score a mention, clearly placing the action here and now.”

Comedy Theatre review by Simon Parris [Man in Chair]

**We are calling for submissions for one act and full-length plays
for our 2025 Season.**

Should you have any enquiries regarding the theatre and staging capabilities please contact our stage manager Debbie Hossack on 0431 843 887 or send submission to acttheatre2@gmail.com

N.B. All submissions need to be received by 30 September.



Please note: New members and guests may not be aware that our theatre has raked seating. In effect this means that EVERY seat has a perfect view of the stage. We are one of the very few community theatres that can offer premium seating at economy rates. So please continue to support your local theatre, enjoy grandstand seating and please pass it on to your friends and frenemies!

Act 1 Calendar 2024

- ***Panic in Pipton*** (*A War of the Worlds Story*) by Andrew Munslow, 13 - 28 Sept
- ***Mother and Son*** by Geoffrey Atherton, 22 Nov - 7 Dec



WANTED



FOH Volunteers

Hello members. **WE NEED YOU.** If you find yourselves looking for ways to be more involved in our theatre, we really need more volunteers in FOH. It is a fun job greeting patrons and socialising with other members. We generally have 8 performances per show and any offers of help would be appreciated. Please contact Deb Hossack on 0431 843 887 for further details on how you can become involved.

Act 1 Management Committee contacts:

Terry Frawley, President/Sets/Bar	5433 0655
Trisha Bromley, Vice-President	0490 053 908
Samantha Sutherland, Secretary	0437 741 553
Ramesh Maheswaran, Treasurer	
Andrew Munslow, Sound & Lighting	0413 759 741
Deb Hossack, Stage Manager	0431 843 887

Other contacts:

Membership Coordinator	0413 759 741
Stan Wisniowiecki, Newsletter Editor	0431 965 307
Bookings	0413 759 741
Jo Barry, Group Bookings	
Stan Wisniowiecki, Website Coordinator	0431 965 307



Act 1 polo shirts available

New polo shirts, navy blue in colour, with Act 1 embroidered logo are now available. They can be worn when working front-of-house or for special events like TheatreFest or any time you want to look flash. Cost is \$30. See illustration below. Available for inspection at the theatre and purchase if we have your size or ordered if not. If interested please call Terry [5433 0655](tel:54330655) or message on [0488 222 596](tel:0488222596) or tezzasf@gmail.com, with your size and male or female style.

TERRY WOULD LIKE TO REMIND ALL OUR THEATREGOERS, "CAR PARKING. DON'T FORGET THAT THE BACK COUNCIL CAR PARK IS OPEN BEFORE SHOWS AND I PROMISE NOT TO LOCK YOU IN. ENTRY IS VIA STATION RD."

Encourage your friends to join Act 1.

Act 1 members receive our monthly newsletter and a significant discount on tickets to Act 1 shows and at Mousetrap, Sandgate, and KSP theatres.

Membership subscriptions can be made at <https://www.trybooking.com/CUIBR>, or by contacting the Membership Enquiries number on Page 1.

If you join now your membership will remain current for 2025 as well.

Share us on Facebook

Please share any Facebook posts about Act 1 with all your contacts. Facebook is one of the main ways we publicise Act 1 and our shows. If you can spread the word to all your Facebook contacts; that will help us greatly. Many thanks for your assistance.

Act 1 Containers for Change drive

Refunds from empty bottles and cans from our bar are donated to the **Motor Neurone Disease** charity.

Drop your refundable items at the theatre or use the MND customer code **C 10084082** when you return your bottles and cans to a refund point and the refund will be paid directly to them. On 28th March we deposited \$31. That is \$65 so far in two drops. MANY, MANY THANKS

Suzy and Johnny on the radio

It Takes Two with Suzy & Johnny on 99.7 Bridge FM is on **6-10pm on Sundays**. They concentrate on the Arts & Entertainment, promoting community events, particularly theatre.

If you have something you would like them to help promote, contact them at suzyandjohnny@997fm.com.au or mobile 0408 718 351. Listen in on Sunday.

You can become a member of 99.7fm for just \$5. Details at www.997fm.com.au .

What's on at local theatres.

We have reciprocal arrangements with these theatres to charge their members' ticket price for Act 1 members (theatre restaurants excepted).

Mousetrap Theatre: *Vintage Hitchcock – A Live Radio Play*, Sep 27, 28, 29, Oct 4, 5, 6
www.mousetraptheatre.asn.au, ph. 0439 954 719.

Sandgate Theatre: *Gaslight*, November 1, 2, 8, 9, 15 and 16
www.sandgatetheatre.net, ph. 3283 2608.

KSP Theatre, Burpengary: *All Stars Talent Quest Fundraiser*, October 6
<https://www.facebook.com/ksptheatreinc/>
www.ksptheatreinc.net, ph. 0434 885 802.

What's on at other theatres.

Theatre 102, Redcliffe: *Magic of Musicals*, October 4 to 6
<https://www.redcliffemusicaltheatre.com>

North Brisbane Theatre Company: *Don't You (Forget About Me)*, SOLD OUT
nbt.com.au (*broken link*)

Centenary Theatre, *Mephisto and Pheles*, September 27 to October 13
<https://centenarytheatre.com.au>

Nash Theatre, New Farm: *Murder on the Nile*, November 15 to December 7
<https://nashtheatre.com>



*MANY HAPPY RETURNS TO ALL
OUR MEMBERS WHO CELEBRATE
THEIR BIRTHDAYS IN SEPTEMBER.*

MEMBERS' CONTRIBUTIONS

Thank you, **Pat O'Callaghan**, for the following item:

A Senior's Version of **FACEBOOK**

For those of my generation who do not and cannot comprehend why **Facebook** exists: I am trying to make friends outside of **Facebook** while applying the same principles. Therefore, every day I walk down the street and tell passers-by what I have eaten, how feel at the moment, what I have done the night before, what I will do later and with whom. I give them pictures of my family, my dog and of me gardening, taking things apart in the garage, watering the lawn, standing in front of landmarks, driving around town, having lunch, and doing what anybody and everybody does every day. I also listen to their conversations, give them "thumbs up" and tell them I "like" them. And it works just like **Facebook**. I already have **4 people following** me: 2 police officers, a private investigator and a psychiatrist.



DO YOU LIKE A CHALLENGE? CHECK OUT THESE RIDDLES.

(Answers are tucked away elsewhere in this newsletter.)

You think they're easy? Don't be too sure! They are all guaranteed to tease the brain. Have fun!

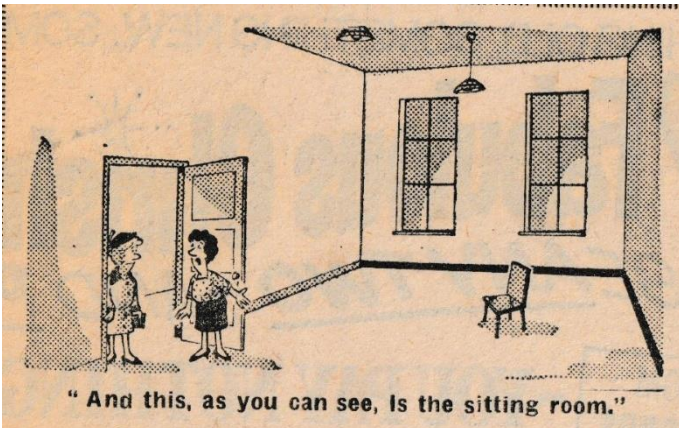
- 1. How many ice creams can a hungry man eat on an empty stomach?
- 2. What colours would you paint the sun and the wind?
- 3. Which month has 28 days?
- 4. What are the next two letters in this series?

AEFHIKLM.

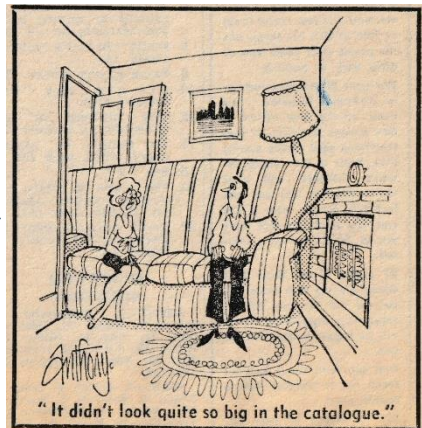
- 5. Two babies are born of one mother at the same time and place, but they are not twins. How do you explain this situation?
- 6. Cross out nine letters in the following line of letters so that the remaining letters, without altering their sequence, will spell a familiar word.

CSAIRXLERTOTETRS

- 7. What is the exact opposite of "not in"?
- 8. How many times can you subtract one from 25?
- 9. Which everyday word in the English language is most often pronounced incorrectly?
- 10. Here is the answer to a question—9W. What is the question?



If you've ever bought from Temu.....!!!



Our brochures are kindly printed by Allclear Harding Colour. For all your printing needs, please call Greg on 0413 433 780 or visit <https://allclear.net.au> .

1, One, because when the man has eaten one he no longer has an empty stomach. 2, The sun rose and the wind blue. 3, They all have. 4, N and T. Each letter is the next one along that is made up of straight lines. 5, They are two of triplets. 6, CARROTS. 7, In. 8, Once. Because when you subtract one from 25 it becomes 24. 9, Incorrect-ly. 10, Do you spell your name with a V, Herr Wagner? (nein, Wi!).